

Nagra, Switzerland: Status, responsibilities and missions

Thomas Ernst, CEO

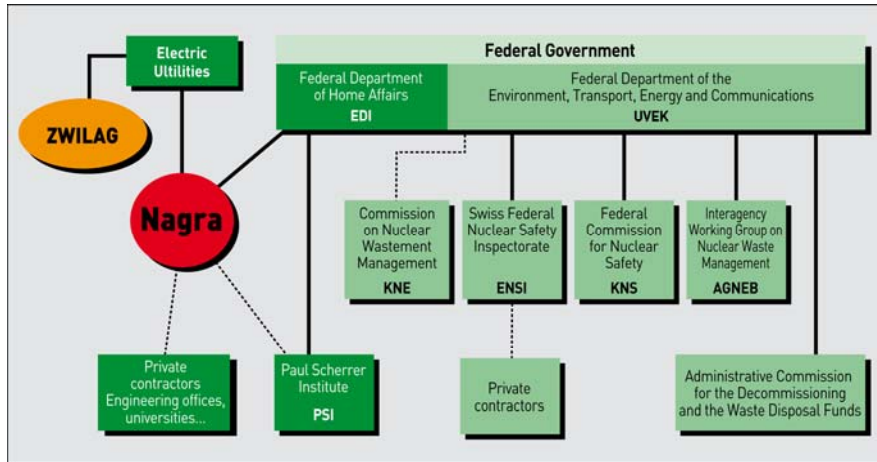
nagra.

Nagra's organisation

- **Swiss National Cooperative for the Disposal of Radioactive Waste**
- Founded in **1972** by radioactive waste producers
- Financed by 5 NPP operators (97%) and the Federal Government (3% - for waste from medicine, industry & research)
- Legal mandate through nuclear legislation (Nuclear Energy Act, entered into force in 2005)
- Staff: currently ~80 (1977: 3, 1982: 31, 1987: 62, 1992: 79)
- Based in Wetingen (region Zurich), research carried out at two Underground research facilities in Switzerland (Grimsel and Mont Terri)
- Formal collaboration agreements with 9 countries
- Budget: EUR ~ 30 million / year



Organisation of radioactive waste management



3

7 June 2010 / Ett

IAEA Technical Meeting on the Establishment of a Radioactive Waste Management Organisation, Paris

nagra.

Nagra's mission

To prepare and implement solutions for waste management and disposal that ensure the long-term safety of man and the environment



4

7 June 2010 / Ett

IAEA Technical Meeting on the Establishment of a Radioactive Waste Management Organisation, Paris

nagra.

Nagra's responsibilities

- Maintaining inventories of **all** radioactive wastes arising in Switzerland
- Planning **deep geological repositories** for all categories of waste
- Carrying out **geological investigations**
- Demonstrating the **safety** of potential sites for geological repositories
- Providing open and transparent **information** to the public
- Promoting **international collaboration** in key areas of research
- Providing **services** for third parties
- Specific activities (on behalf of the waste producers)
 - Preparation of waste management programme
 - Preparation of cost estimates for disposal



5

7 June 2010 / Ett

IAEA Technical Meeting on the Establishment of a Radioactive Waste Management Organisation, Paris

nagra.

Specific responsibilities: Site selection phase

- Site selection follows „sectoral plan“ procedure: Stepwise approach with clear definition of the roles of the various stakeholders
- Nagra's role:
 - Prepare repository concepts and all the necessary geological materials and data
 - In **stage 1**, propose geological siting regions for HLW and L / ILW based on criteria relating to safety and technical feasibility
 - In **stage 2**, propose at least two sites each for the HLW and L / ILW repository
 - In **stage 3**, select the site and prepare the general licence application



6

7 June 2010 / Ett

IAEA Technical Meeting on the Establishment of a Radioactive Waste Management Organisation, Paris

nagra.

Thank you
for your interest
nagra.